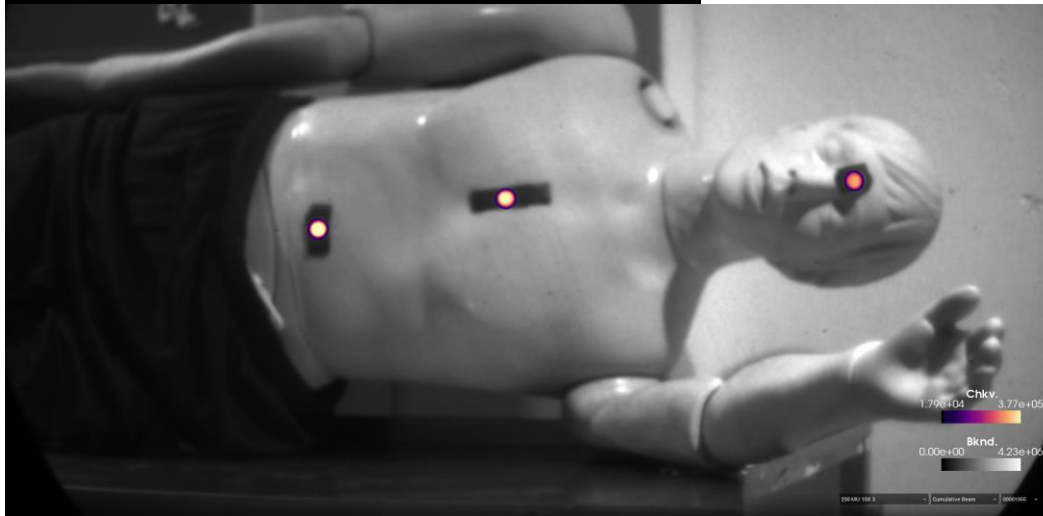
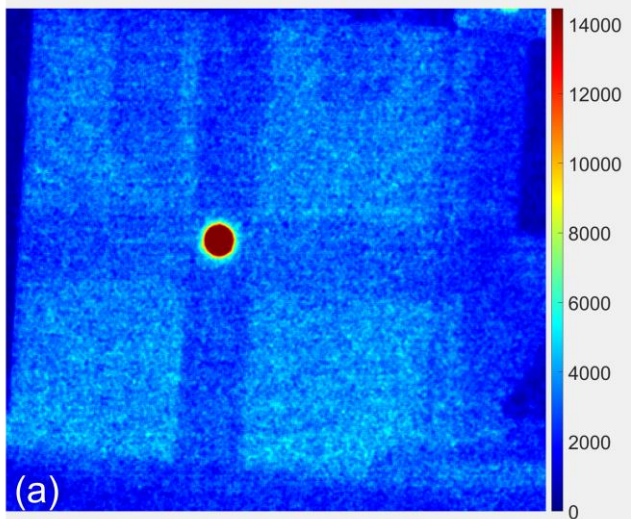
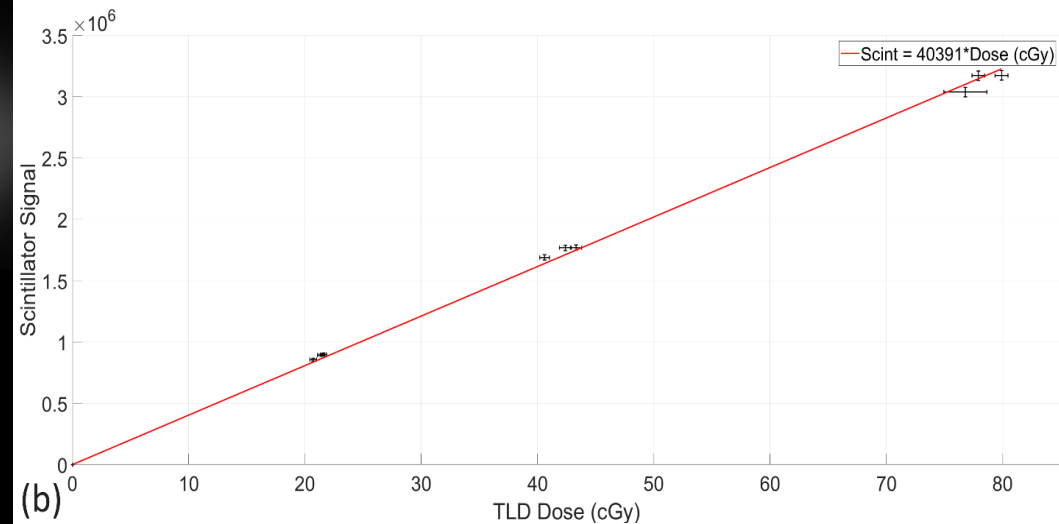
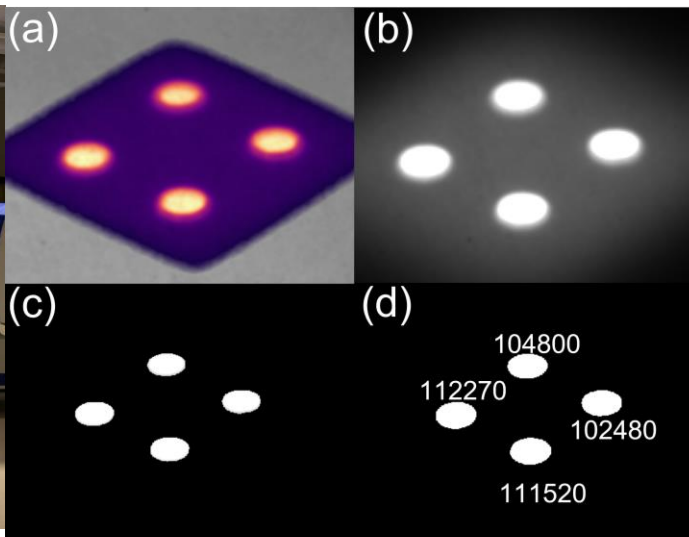
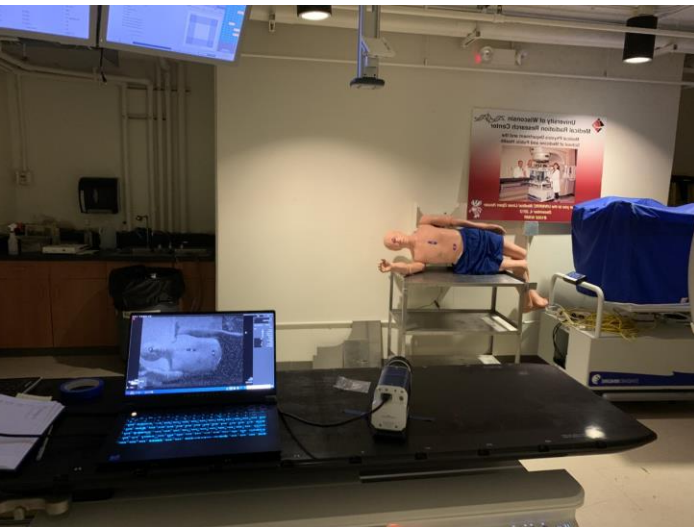


Non-Contact Scintillator Dosimetry in TBI



| | |
|------------------------|------|
| Buildup Material | SBR |
| No Spoiler or Bolus | 25.6 |
| Spoiler | 22.0 |
| 3mm Bolus | 9.2 |
| 3mm Bolus and Spoiler | 7.7 |
| 5mm Bolus | 6.2 |
| 5mm Bolus and Spoiler | 5.0 |
| 10mm Bolus | 5.2 |
| 10mm Bolus and Spoiler | 4.4 |